

# “Channeling Natural Water Resources to Pondok Penyayang Raudah, Gombak”

by Engr. Shuhairy Norhisham and Engr. Lee Cheng Pay

**PONDOK PENYAYANG RAUDAH**, Gombak, The IEM – Young Engineers Section under Community Portfolio had organised a community project - Channeling natural water resources.

Pondok Penyayang Raudah is a non-profit charitable home that administers shelter, care and training to orphans, children and teens who are underprivileged, formerly suffered abuse and neglect, and children who are delinquent and poor. To date, the home has more than 100 children and teens from all over Malaysia.

They faced with the problem of having a low pressure water pipe. Although their premise had been equipped with piped water, with the location of the home near a hill, the water that came out from the tap is low in pressure and very slow. This created a challenge as the home accommodated more than 100 orphans and staff.

Under this project to help children from Pondok Penyayang Raudah, young engineers came out with idea to tap water from a small waterfall behind the hill at the back of the house to provide an alternative water source to them. The idea is to connect HDPE pipe from the river to a water tank uphill and channel it to Pondok Penyayang Raudah. The waterfall is around 700m from the orphanage house. The engineers were able to successfully connect a pipe from the waterfall to a tank to collect water. A total of four lines of piping and tank were installed for this project.

The budget for this project was about RM5000 to provide a 3km HDPE pipe, six water tanks, and piping and joint equipment. This fund came from the IEM-YES Charity Dinner which was held in 2008. Despite the heavy rain, the project finished at 6.30 p.m.

It was a very meaningful day for the engineers as they lend their expertise to help the children of Pondok Penyayang Raudah. The water tanks and pipes were successfully laid and installed - 250m from the hilltop through streams and the forest down to the houses.

The engineers were happy to see the children cheered when they had a better water supply. This was another community project from IEM-YES to serve the local community. ■

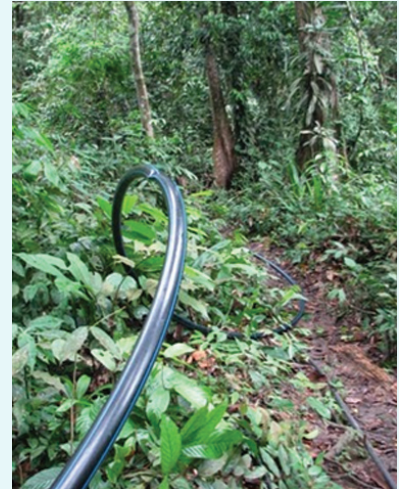


Figure 1: The pipe that transferred water from the hilltop to its destination



Figure 2: The pipe is important as a connector - getting closer to the destination



Figure 3: The two large tanks that needed to be installed



Figure 6: The place where the mission "possible" was to be



Figure 5: A photo of the crew - mission accomplished



Figure 4: Finally, standing on the hilltop with the tank to store water